



Albion Park Quarry Stage 7 Extension

December 2020

Project Overview

Cleary Bros has lodged a Scoping Report with the NSW Department of Planning, Industry and Environment (DPI&E) for the Albion Park Quarry Stage 7 Extension Project.

The Project aims to:

- Secure access to a long-term hard rock resource for use in the Illawarra and Greater Sydney Regions
- Meet the increasing supply demands over the next 30 years
- Maximise resource recovery within the defined extended extraction area
- Progressively rehabilitate the land and undertake activities in an environmentally responsible manner
- Maintain local employment
- Continue support of local community-based groups and initiatives.

Key features of the Project

A table showing the key features of the Project is provided overleaf. The key features of the Project include:

- Removing 3.5 million tonnes (Mt) of overburden
- Extending the disturbance area to include approximately 19.5ha of additional land currently within the Cleary Bros property boundary
- Extracting and processing approximately 27.5Mt of hard rock at up to 900,000 tonnes per year
- Progressive rehabilitation of the completed quarry.

The Approval Process

The Project is classified as a State Significant Development and requires development consent under the NSW Environmental Planning and Assessment Act 1979.

The lodgement of the Scoping Report has resulted in the issuing of the Secretary's Environmental Assessment Requirements (SEARs) for the Environmental Impact Statement (EIS).

Cleary Bros are currently preparing the EIS for the project which is expected to be publicly exhibited early in 2021.

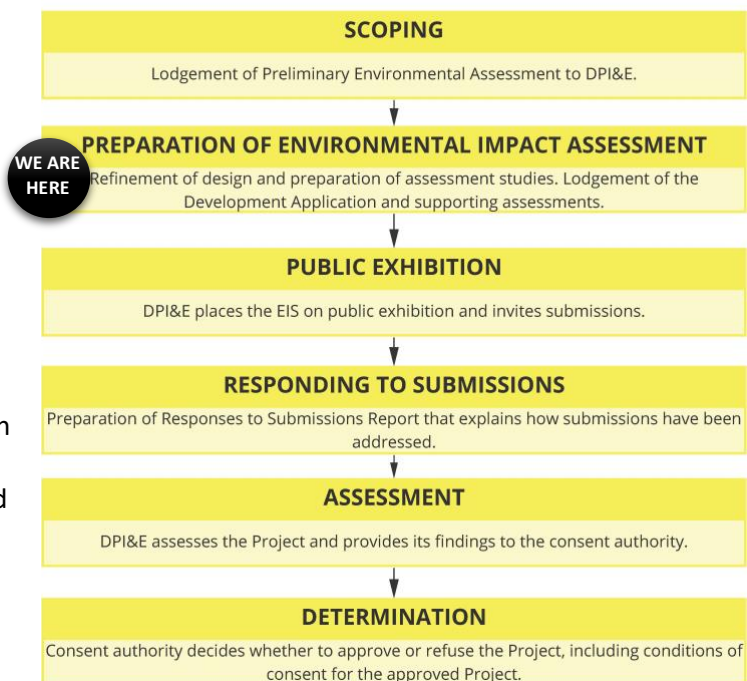


Figure 1: Environmental Approval Process



Community Engagement

Community Engagement was undertaken during the Scoping Phase of the Project. The most frequently cited concerns related to:

- Visual impacts from quarry equipment, quarry faces and long-term landscape changes
- Social amenity concerns in regard to vibration and noise from operations, and air quality impacts
- Livelihood impacts and concerns that the Project may restrict the ability to further develop the property.

More information

If you would like to learn more about the Project, please contact Mark Hammond, Quality and Environment Manager at Cleary Bros via:

- MarkHammond@clearybros.com.au
02 4275 1000

Have Your Say: Social Impact Assessment

A Social Impact Assessment is a currently underway to identify and evaluate social impacts of the project and develop appropriate management and enhancement strategies.

An online survey to provide feedback on the project is currently available for your input at www.clearybros.com.au/albion-park/APQ7/

Alternatively, to provide input into the SIA please contact Angela Peace from Element Environment via email at Angela.Peace@elementenvironment.com.au

Table 1 Key Project Features

Project Element	Description	Changes to current approved operations
Extraction Method	Conventional drill, blast, load and haul	No change
Project Area	Stage 1 to 6 of the current extraction area and Stage 7 of the proposed extraction area extension (See figure 1)	Stage 7 of the proposed extraction area extension (See figure A)
Infrastructure requirements	Use existing infrastructure and build internal access roads only	Minimal change. All other infrastructure is already in place/approved
Extension Disturbance Area (Stage 7)	Approximately 19.5ha	Current disturbance area is 16ha. The Project will increase the total disturbance area to 35.5ha
Product Transport	Using existing approved haulage routes.	No change
Annual Production	900 000t (maximum)	No change
Project Duration	30 Years	Additional 15 years from currently approved quarry life
Processing	Transported by haul trucks to the already approved fixed processing plant Periodic processing of some extracted rock within the Project Area using mobile crushing and screening equipment	No change
Operational Workforce	Approximately 30 employees and contractors would continue to be directly involved in extraction and processing operations at the Quarry. A further 50 employees and contractors would continue to be employed outside of the quarry as a result of continuing quarrying operations	Continued employment for additional Project life
Hours of Operation	<ul style="list-style-type: none"> • 7:00am to 5.30pm Monday to Friday. • 7:00am to 1:00pm Saturday. • No operations on Sundays or Public Holidays 	No change
Water Management	Diversion banks constructed to redirect clean runoff away from the active extraction area. A series of sediment basins and a sump within the active extraction area to control sediment-laden runoff	New diversion banks, sediment basins and associated water management infrastructure
Rehabilitation	Rehabilitation will occur progressively throughout the Project life	Final landform to be revised to incorporate expanded quarry footprint



Albion Park Quarry - Stage 7 Boundary

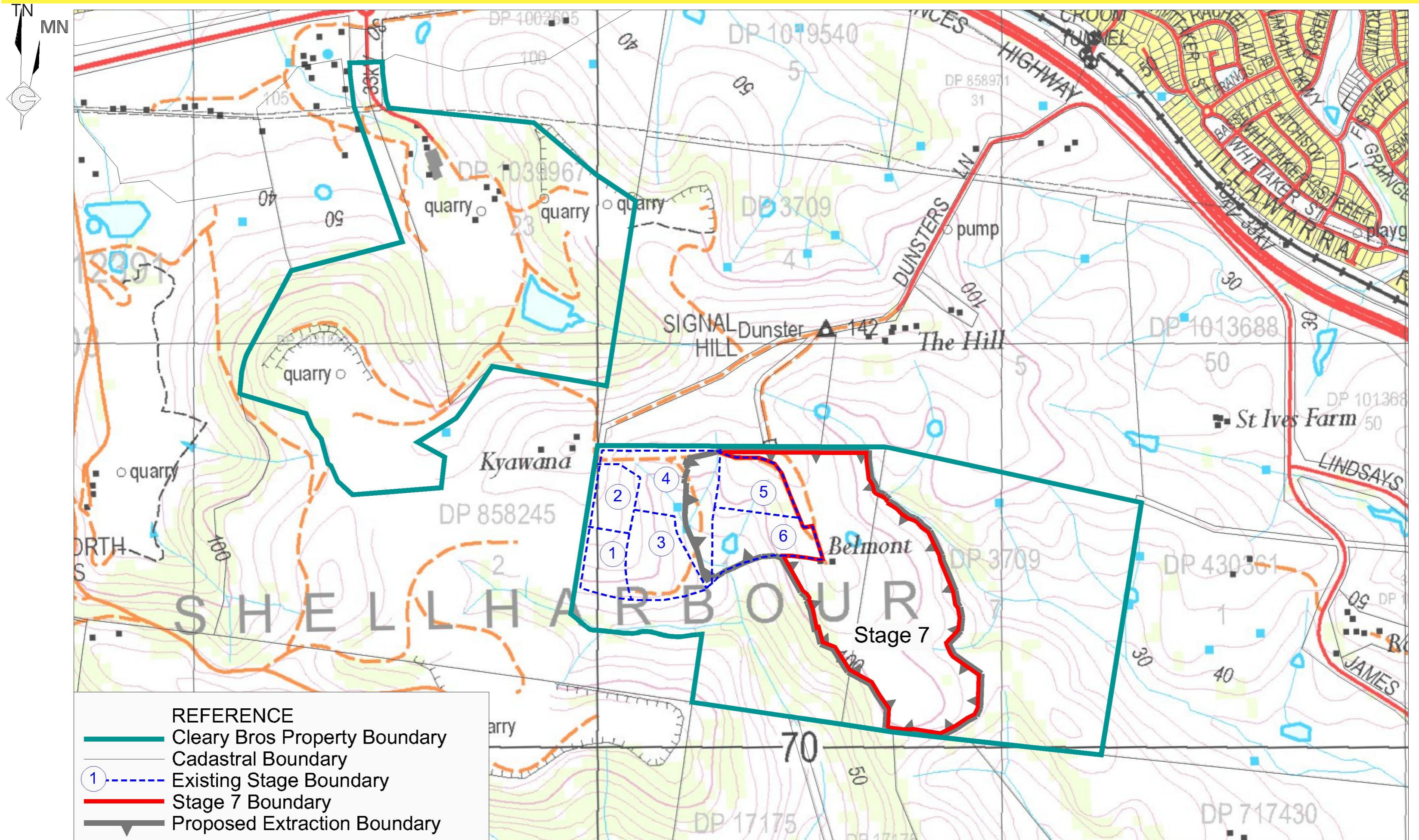


Figure A